



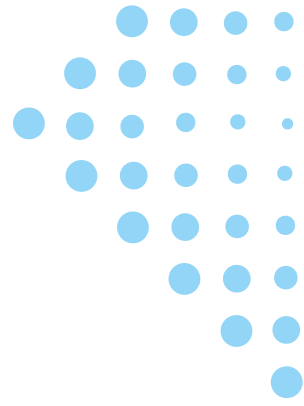
— elixair by —  
**Genano**

# Elixair<sup>®</sup> E600

**AIR DECONTAMINATION UNIT**

Manual (English)

# Contents



<b>E600</b> .....	<b>3</b>
Contents of delivery.....	4
Technical specifications.....	4
Precautions.....	5
Lifting and carrying.....	5
Installation.....	6
Operational use.....	7
Maintenance.....	8
Product storage.....	9
End of life Instructions for Disposal.....	10

# Elixair® E600

## Air Decontamination Device

Congratulations for purchasing a high-quality product!

Elixair E600's unique technology removes even the smallest impurities from indoor air. These impurities can consist of particles, viruses, bacteria, mold spores as well as pollution. The product outlet provides you clean indoor air without particles or gaseous contaminants. E600 is designed especially for the air purification needs of various types of healthcare spaces and laboratories.

If you start the product for the first time, it is recommended to use the highest fan speed for a short period, then lower the speed for continuous use. Lower fan speed drops the noise to comfortable level. The room indoor air is kept clean by continuous circulation through E600 product.

E600 requires maintenance and service for removing the collected air contaminants and replacing the air collector with a fresh component. Suitable maintenance period is twelve (12) months.

### **Genano Oy**

Metsänneidonkuja 6  
02130 ESPOO  
Finland

See our website for contact information:

[www.genano.com](http://www.genano.com)



# Contents of delivery



## **1 E600 unit with power cable**

Product package contains the E600 product with power cord suitable for local AC grid supply socket, four legs and wall installation accessories.

## **Disposal of delivery package**

Consumer package of this product is made of recyclable carton and cellulose materials. Dismantle the package before disposal. Follow the local advisory for recycling materials.

# Technical specifications

- Air flow adjustable 80...246 m<sup>3</sup>/h
- Mechanical dimensions (w x h x d): 34 cm x 93 cm x 38 cm
- Weight: 16,7 kg
- Class I electrical installation with Protective Earth (PE) in use
- Rated input voltage: 220-240 Vac  $\pm$  10 % fluctuations of mains voltage
- Protected against occasional low energy over voltage spikes in the mains voltage
- Rated input voltage frequency: 50/60 Hz
- Power consumption: Max 71 W
- Operational temperature range: +5°C...+40°C
- Operational humidity 50 % RH up to +30°C, decreasing to 40 % RH at 40°C
- Max operational altitude 2000 m
- Operational environment pollution degree 2
- This appliance is designed to be used indoors and commercial areas
- Vertically standing assembly or wall installation

# Precautions



## Caution! Risk of electric shock!

! This appliance is not intended for use by persons (including children) with reduced physical, sensory or mental capabilities, or lack of experience and knowledge, unless they have been given supervision or instruction concerning use of the appliance by a person responsible for their safety. Children should be supervised to ensure that they do not play with the appliance.

! The product shall be used only in dry indoor environment.

! The product shall be used only with connections providing Protective Earth (PE).

! The product has serviceable parts inside. Only Service Personnel authorized by the manufacturer shall open the chassis mechanics for maintenance and service.

! The product has maintainable parts inside. For maintenance operations obey carefully the maintenance instructions given in this user manual.

! For ensuring product's performance and safety, use only original materials and components validated and provided by the manufacturer, Genano Oy, Finland.

! The product shall be used only as the User Manual instructs. Improper use of the product may impair the protection provided by the product design.

## Lifting and carrying

The product weights 16,7 kg. Handle for carrying the product is on the back cover.

# Installation

! The product shall be used and stored indoors.

! Do not use the product in vicinity of concentrated flammable gases, liquids, or large amounts of dust. The product's internal operation may ignite the concentrated gases or dust.

! Do not use the product in rooms without fresh air ventilation.

! Connect the product with the AC power cord delivered with the product package.

! Use only AC power cord rated 220-240 Vac and with ground (PE) connection. Wire diameter >1.5 mm<sup>2</sup>.

! Do not position the product so that it is difficult to operate if disconnection is necessary.

! The product shall not be used without legs when in free standing installation

## Free standing floor installation

Position the product vertically on an even base in close vicinity of the room fresh air ventilation. Ensure that the air inlets in the bottom sides or the clean air outlet on top of the product are not covered by other objects. Connect the power supply cord to a wall socket with Protective Earth (PE) connection.

For safety of use ensure in all installations that the AC power cable can be detached easily.

Do not install the product in wet locations, outdoors, or sheltered outdoor areas without temperature control.

## Wall Installation

Make sure the wall can handle the weight of the unit. Measure the distance between hanging holes. Install wall anchors and screws accordingly and place the unit on the screws. Also horizontal installation is possible.

# Operational use

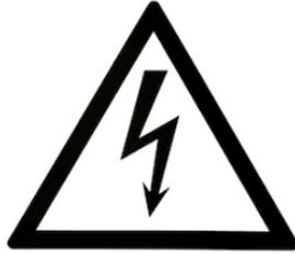
! This appliance is not intended for use by persons (including children) with reduced physical, sensory or mental capabilities, or lack of experience and knowledge, unless they have been given supervision or instruction concerning use of the appliance by a person responsible for their safety. Children should be supervised to ensure that they do not play with the appliance.



**Picture 1.** E600 knobs at the bottom: Supply power inlet, on/off switch and fan speed control.

1. Turn on the product after connecting AC power cord, press the on/off switch on bottom plate.
2. Adjust the air volume by turning the fan speed knob on the bottom plate. If you start the product for the first time in a room, it is recommended to use the highest fan speed for a short period, then lower the speed for continuous use. Lower fan speed drops the noise to comfortable level. The room indoor air is cleaned and kept clean by continuous circulation through E600 product.

# Maintenance



## Caution! Risk of electric shock!

Only Genano company authorized personnel may perform the maintenance operations. For maintenance contact the local Genano representative.

- ! The product has high voltage parts inside.
  - Only Service Personnel authorized by the manufacturer may perform tasks that require opening the product.
  - Do not let liquids enter product chassis!
  - Disconnect the power supply before any maintenance operation!

## Cleaning

De-energize the product by disconnecting AC power cord from 220-240 Vac 50/60Hz. Wipe the product clean with slightly wet cloth. To avoid any damage on surface do not use strong detergents.

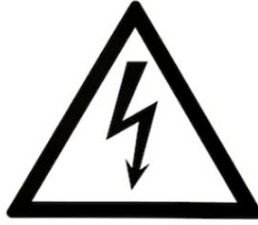
## Air collector replacement

Only Genano company authorized personnel may perform the maintenance operations. For maintenance contact the local Genano representative.

- ! In order to ensure continuous air cleaning process it is essential to perform regular maintenance by replacing the collector package with a fresh one.

The air collector absorbs gaseous particles and Volatile Organic Compounds (VOC). The air collector is in the upper chamber of the product. The air collector typically wears out in one (1) year cycle and shall be replaced with a fresh one.





### **Caution! Risk of electric shock!**

The product has high voltage parts inside.

- Only Service Personnel authorized by the manufacturer may perform tasks instructed here

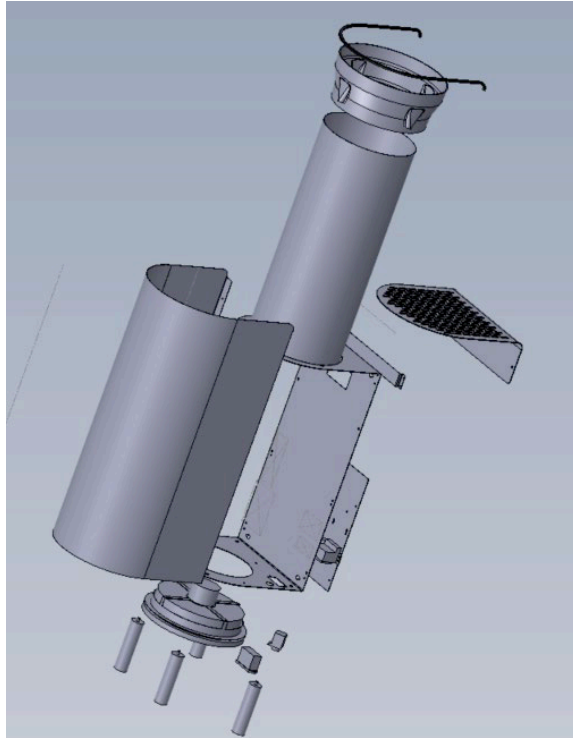
As a service operation the E600 air decontamination unit requires cleaning of the collector tube at least once a year. For cleaning the collector tube the product shall be dismantled for the cleaning. Only Genano company authorized personnel may perform the maintenance operations. For maintenance contact the local Genano representative.

## **Product storage**

If not used the product shall be stored indoors at dry environment. It is recommended to cover the fresh air outlet on top side of the product. This prevents cumulating of dust that would be spread around as the device is taken into use and started.

# End-of-Life instructions for disposal

E600 product shall be recycled by dismantling the product and sorting the components into following categories:



**Picture 2:** Main components of E600.

- 1) Product chassis and electronics base plate shall be recycled as aluminium (Al) parts.
- 2) Collector tube shall be recycled as ferrous steel (Fe).
- 3) Electronic components and cables shall be recycled as electronic waste.
- 4) Active carbon support shall be recycled as plastic waste.
- 5) Product fan unit shall be recycled as electronic waste.
- 6) Product cover shall be recycled as aluminium waste.
- 7) Product's feet shall be recycled as aluminium waste.





[www.genano.com](http://www.genano.com)

